



666 Trail Run

Sunday 18th November 2018 @ 10am

**Start & Finish: Kings Wood Forestry Commission Main Car Park,
Off White Hill Road, Challock, Ashford, Kent TN25 4HB**

Directions To Kings Wood

Challock is the nearest village.

Directions by car:

- From the M2 take the A251 towards Ashford.
- From the M20 take the A28 towards Canterbury and the A251 towards Faversham.
- The car park and entrance to King's Wood is situated off White Hill Road, off the A251, signposted to Wye.

Car Parking

There is parking available in the main car park by the run start area, However the woods are popular and this car park fills quickly.

There is a large car park at the village hall Off Blind Lane in Challock. It is a good half mile away from the start.

Please leave plenty of time for a walk/jog from the car park to the start line.

These are marked in a map at the end of this document.

On the day

Number collection and on the day entry: 08:00 to 09:30

Please collect your running number from registration

Registration is in the Gazebo just off the main car park.

Race briefing: 09:45 By Registration

It'll be about the run and it'll be brief!!

RUN STARTS 10:00 PROMPT NEAR THE REGISTRATION TENT

Event rules

The 666 will take place under UKA Rules.

Check them out at www.uka.org.uk

As such **NO DOGS** are permitted on the run course

All our Marshalls and race officials are volunteers so please don't abuse them. A DQ will result.

Remember there is wildlife at large in the woods so take care. Running into a deer is a Capital Crime in parkland and you could get your trainers dirty!

General Public are also at large on paths and trails bleary eyed after a night out!

You have been warned!

PLEASE NOTE: Due to the nature of the course it is NOT POSSIBLE TO PROVIDE drinks stations out on it. HOWEVER there is a water station at the Start/Finish area. THEREFORE YOU NEED TO TAKE WATER/GELS/ENERGY BARS WITH YOU IN A BUM BAG OR RUCKSACK. OFF ROAD SHOES RECOMMENDED but the course is not suitable for spikes

Facilities

Toilets - will be provided near the Transition area.

Nearest Showers are at the Stour Centre in Town 5 miles away.

Refreshments

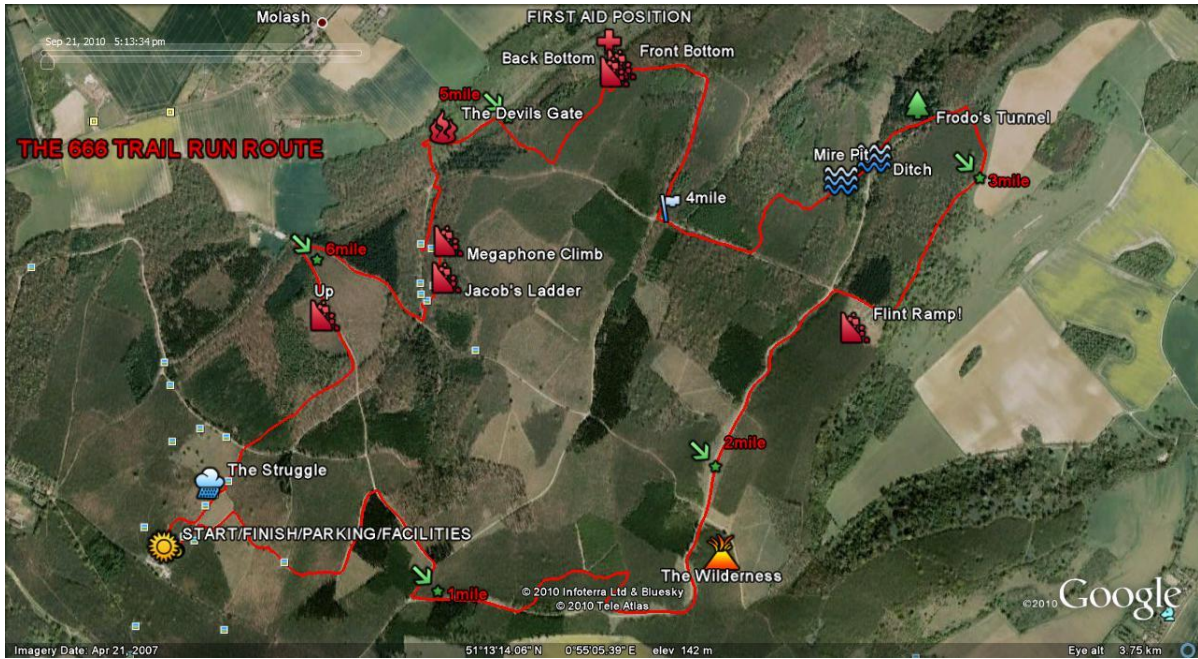
There will be a Tea Wagon/Burger Van in the Car park so you can replenish those calories burned.

Post run

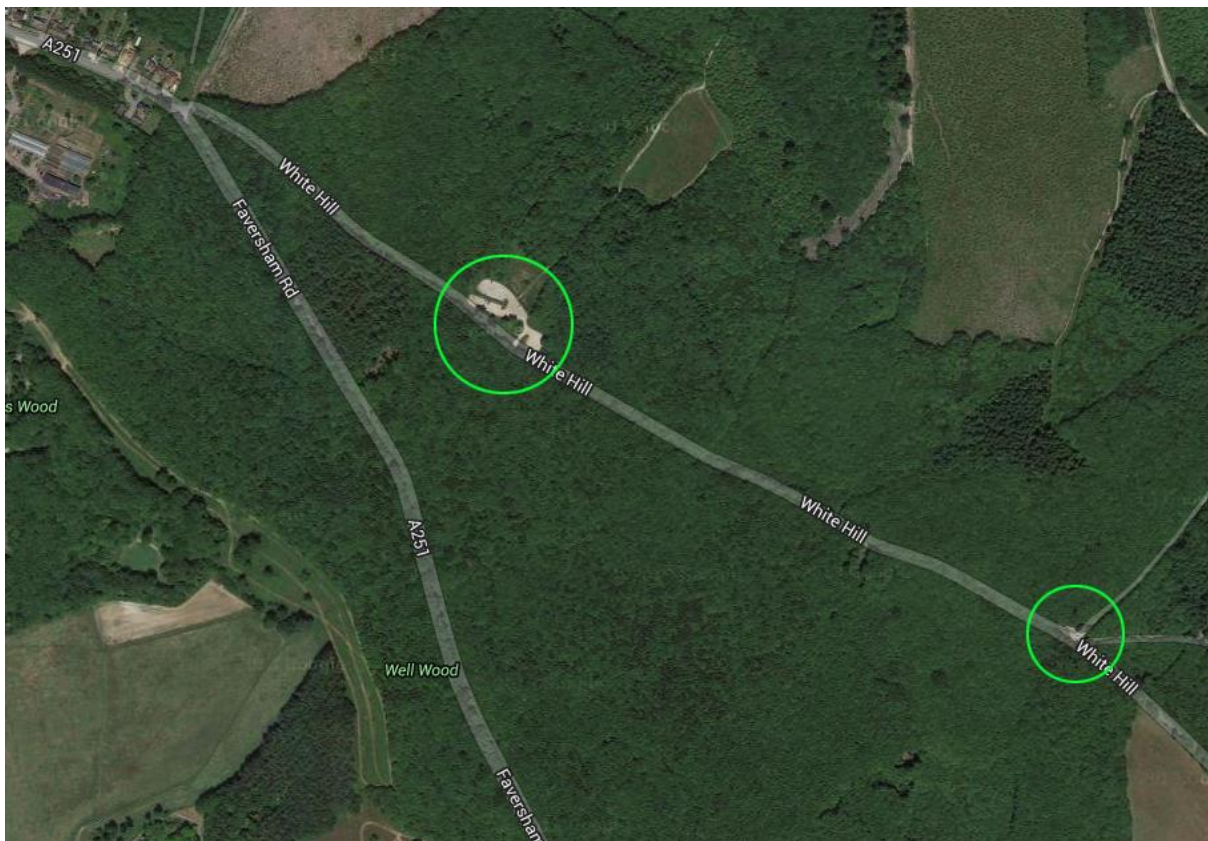
Don't forget to collect your finishers momento!! Run results will be on display on our website as soon as humanly possible after the race has finished.

Prizes for 1st Male and 1st Female will take place shortly after the last competitor has finished. This will be near the registration area.

Course route



Parking



And finally...

A Huge Massive Big Thanks for entering our event.

Enjoy!

Jim Hawkins
Race Organiser
Ashford Tri Club

